

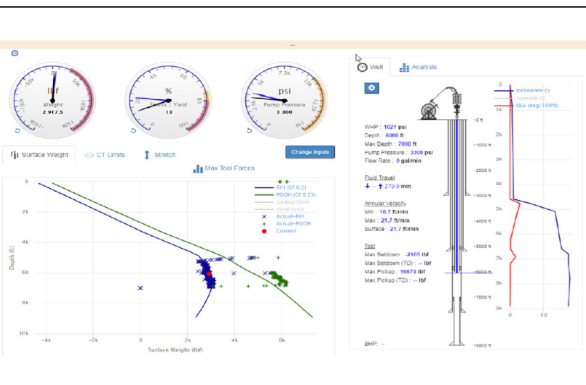
COILED TUBING & PUMPING

REAL-TIME COILED TUBING



MAKING INTERVENTION
SMARTER

Our intelligent Real-time Coil (RtC) system optimises operational efficiency facilitating informed decision making based on accurate and live information, logging data without additional runs.



APPLICATIONS

- Suited to all coiled tubing operations
 - Enhance conventional coiled tubing (CT) operations with pump through GR/CCL, dual pressure and temperature surface read out (SRO) gauge.
 - Conveyance of SRO production logging tools.

FEATURES

- Control, monitor and assess live data from downhole coiled tubing operations.
- Two modes of operation:
 - Intelligent CT - enhance standard CT operations
 - Logging CT - deploy logging tool string
- Real-time operational risk reduction.
- Continuous and accurate depth correlation and measurement.
- When combined with Live Link, real-time data can be transferred to onshore team.

BENEFITS

- Enhances accuracy of standard CT operations.
- Enables efficient conveyance of logging tools into deviated wells.
- Clients can monitor and optimise job performance in real-time.
- Improves operational efficiency and provides more value as downhole uncertainties are reduced or eliminated.
- Deployed by experienced and multi-disciplined Altus Intervention crew.

KEY ITEMS	SPECIFICATION
System rating	10000psi and 347F
Conductor weight	31 lbs/1000ft
Well control	Cablehead c/w dual flapper check valves, burst disk and hydraulic disconnect
Dimensions	Logging CT - 7.7ft Intelligent CT - 14ft
Data output	Real-time in either CT cab or A60 logging cabin. Real-time data transfer onshore when combined with Live Link